



**NEPTUN·SUB**

**ROV FALCON Specification**

- Distributed intelligence control system
  - Integral system diagnostics

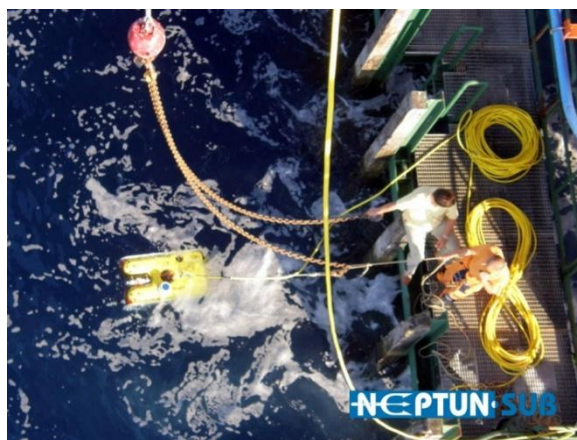
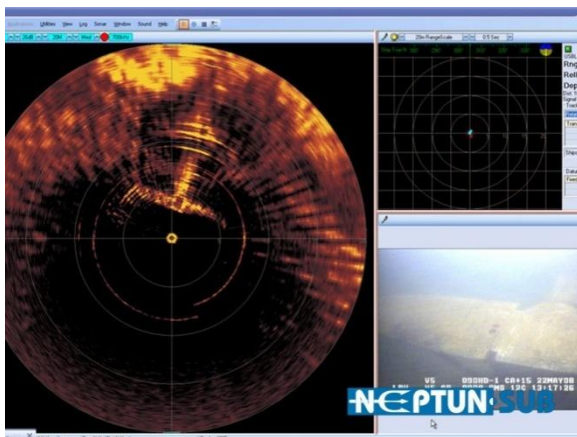
<b>Depth Rating</b>	<b>Maximum Depth</b>	<b>300 m</b>
<b>Propulsion Brushless DC 4 Vectored and 1 vertical thruster</b>	Vertical Thrust	14 kg
	Forward Thrust	50 kg
	Lateral Thrust	28 kg
<b>Speed</b>		> 3 knots
<b>Cable on reel with sliprings</b>	Lenght standard	350 m
<b>Depth</b>	Pressure sensor	Include
	Depth control	Manual/Auto
<b>Auto funcion</b>	Controller functions	Auto – depth Auto - heading
<b>Monitor</b>	Portable surface control system with video overlay and daylight readable display	17" LCD
<b>Ligtning</b>	Front Lights	150 Watt Variable intensity
<b>Camera</b>	High resolution colour camera on 180° Tilt Platform	
	Rear/Side Camera	Yes
<b>ROV Dimensions</b>	Lenght	600 mm
	Width	1000 mm
	Height	500 mm
<b>ROV Weight</b>	Width	80 kg in air, neutral in water
<b>Elctrical</b>	A/C power input - auto selecting universal 100-270 VAC at 2.8 kW	

## Additional equipment (optional):

Positioning System - GPS - Heading and Positioning Receiver
Sonar - Super SeaKing DST Digital CHIRP system
Tracking systems - USBL acoustic tracking systems
3 Jaw Manipulator & Rope Cutter
CP Probes
Cleaning Brush
Ultra Sonic Thickness Gauge
Real-time visibility enhancer







**CONTACT US FOR MORE INFORMATION:**

+385 (0) 22 331 444 /// +385 (0) 22 310 256

[www.neptun-sub.hr](http://www.neptun-sub.hr)

[neptun@si.t-com.hr](mailto:neptun@si.t-com.hr)